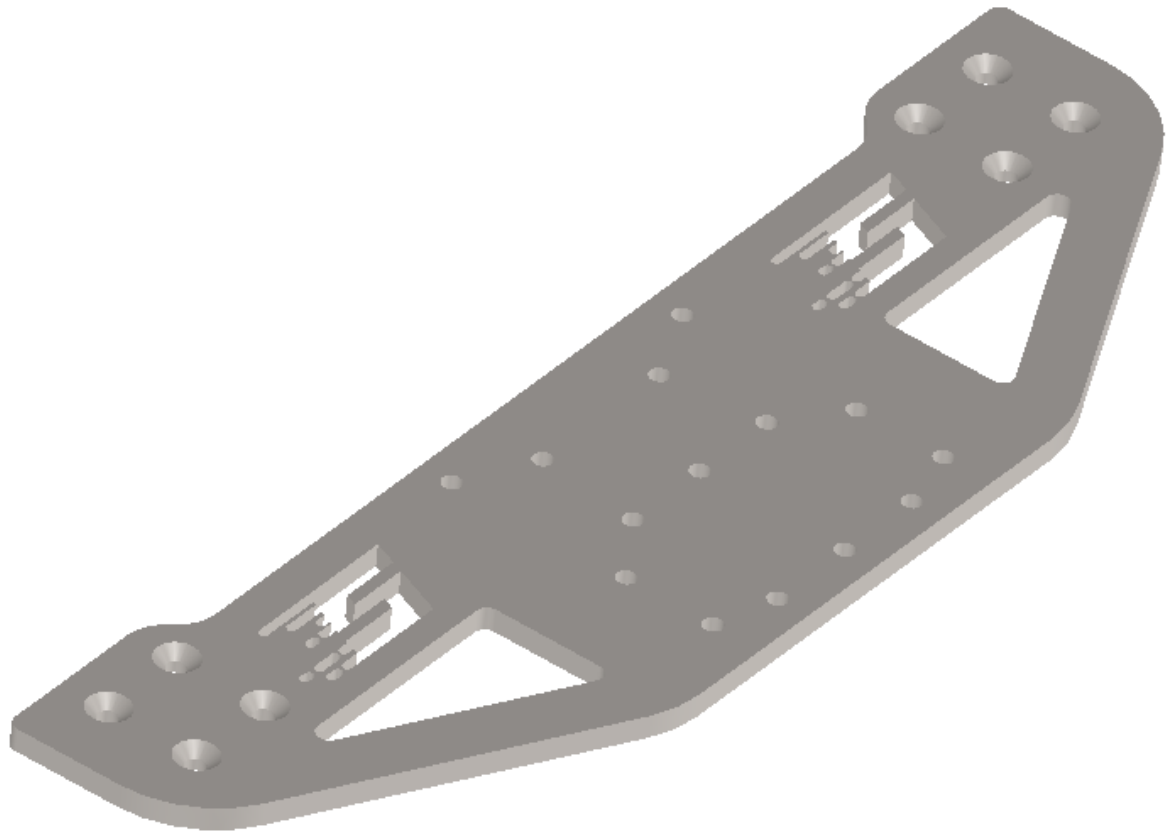


SimPlexity Wheeldeck manual



Parts list:

- 1X Wheeldeck main plate
- 1X Wheeldeck left side bracket
- 1X Wheeldeck right side bracket
- 4X Mounting brackets
- 4X Mounting bracket covers
- 8X Large washers
- 8X M8 25MM bolts
- 8X M8 profile t-slots
- 12X Countersunk M8 25MM bolts
- 8X M8 Locking nuts with blue locks
- 4X M8 Locking nut washers

**Tools List:**

- Allen Key size H8
- Spanner size 13MM
- Flatheaded screwdriver

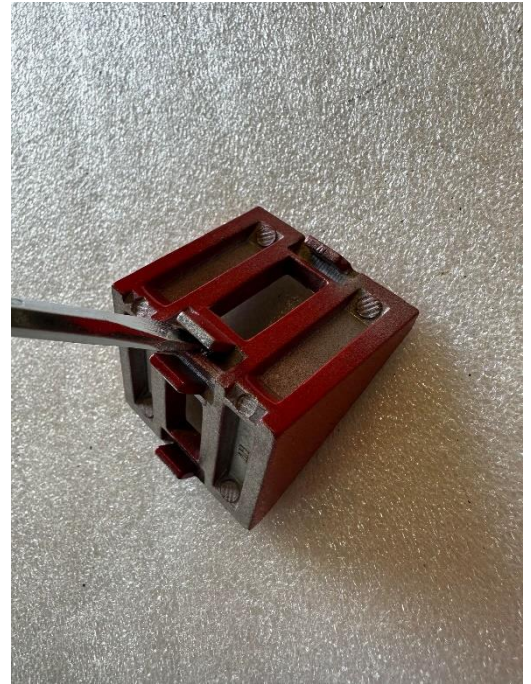


Step 1:

Break off the metal lip at the rear of the 4X mounting brackets.

This is done by using a flatheaded screwdriver and breaking off the lip by lifting the screwdriver in the inserts.

All 4X lips on each bracket must be removed.

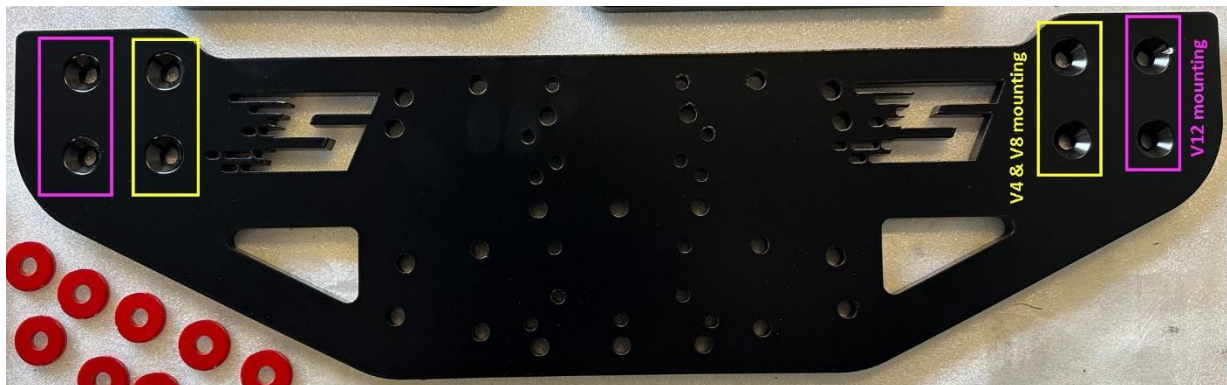


1.1 The mounting bracket will now look like this.



Step 2:

Locate which mounting holes you need to use for the left and right side wheeldeck bracket. If you have a V4 or V8 cockpit you use the inner holes. If you have a V12 cockpit you use the outer holes. Pink = V12 mounting. Yellow = V4 & V8 mounting. As seen on the picture below.



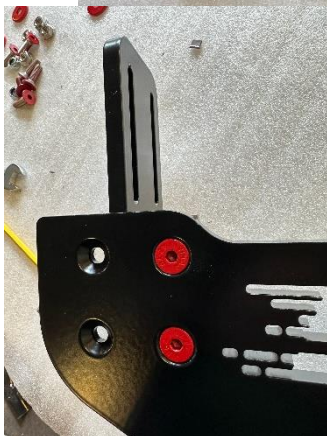
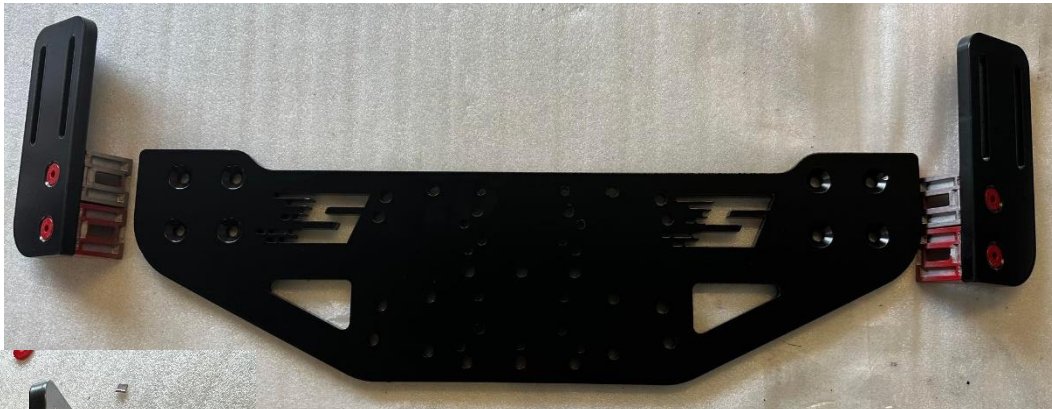
Step 3:

Mount the mounting brackets on the wheeldeck side brackets. You need to use the countersunk M8 25MM bolts and the M8 locking nuts with blue inserts. The mounting brackets need to be mounted flush with the outside of the wheeldeck side bracket. NOTE: Be aware of the orientation of the wheeldeck side brackets as there is a right and a left side model. See pictures below.



Step 4:

Find the correct orientation of the wheeldek side brackets (Right/left version) and locate the mounting holes that is needed for your cockpit. If in trouble check step 2 in this manual to locate your V4, V8 or V12 cockpit mounting holes. Mount the wheeldek side brackets to the the wheeldek main plate with the countersunk M8 25MM bolts and M8 locknuts with blue inserts.



Step 5:

Cover the extra mounting holes for a nice clean look. This step has no functionality only visually. Skip if you don't want the clean look. Use the countersunk M8 25MM bolts and the M8 locking nut washers. See pictures.



NOTE: THIS IS THE V4 & V8 MOUNTING OPTION. WOULD BE OPPOSITE ON V12.

Step 6:

Time to mount the wheeldeck to your cockpit. Use the included M8 t-slots and insert them on the inside of the profiles going up to where your steering wheel would normally sit. You need to use the normal hex head M8 25MM bolts & washers to mount the wheeldeck to your cockpit at your desired angle. **IMPORTANT: USE THE INCLUDED THICK WASHERS OTHERWISE BOLTS WON'T FIT.**



Step 7:

Finish off the build with putting on the mounting brackets covers to cover the inside of the mounting brackets. Afterwards mount your steering wheelbase to your new wheeldeck. Enjoy the driving!

